



# RS | POWDERTECH

Electrostatic powder coating  
for a dust-free and fine adjustable  
powdering of cables, wires, hoses,  
profiles and bands with powders like  
talc, stearate, swellable powder etc.

quick | even | dust-free

CERTIFIED IN COMPLIANCE WITH  
ISO 9001





# POWDERING

with defined adhesive power ...

## Powder coating machine

This machine is the result of a consequent further development of the preceding model PBA 30-2E. By developing new technics in the field of electrostatic and filter systems we succeeded in simplifying the machine, in reducing the consumption considerably, in reducing the costs, but in maintaining the well known powdering quality.

The product which shall be treated is covered with powder evenly all around by two (one) electrostatically working powder gun/s. The electrostatic charging not only generates a very even distribution of the powder on the surface, but also a strong adhesion on the product. Furthermore, also outside the dusting chamber no powder falls from the product.

The absolutely dust-free operation of the machine is reached by a completely new filter system which is no longer cleaned by compressed air. The compressed air consumption of the machine could be reduced by approximately 2/3.

The powder is sucked by jet pumps (Venturi-nozzles) from a fluidised powder hopper and blown by the guns onto the product. The quantity of powder as well as the electrostatic charging is adjustable depending on the extrusion speed.

### Advantages

- > 1-2 powder guns, 100 kV
- > filter without cleaning by compressed air
- > compressed air consumption reduced by 2/3
- > defined adhesive power
- > inner dusting chamber
- > powder flow indication with alarm
- > free standing dusting chamber
- > 90 l powder hopper
- > fine dosing device



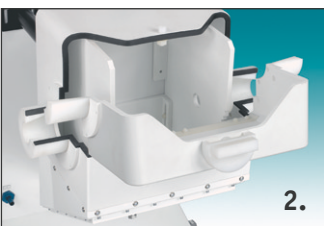
MACHINE DESCRIPTION

QUICK CLEAN DUST-FREE PRECISE

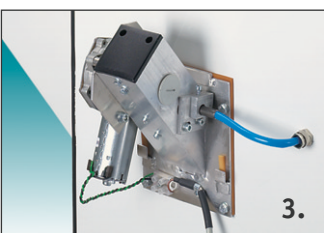
# QUICK CLEAN DUST-FREE PRECISE



1. 100 kV powder gun: Horizontally mounted with replaceable rebounding plates to adjust the size of the powder cloud.



2. Dusting chamber: Made of 10 mm thick polystyrene with inner dusting chamber for calming down the vacuum air and increasing the powdering quality.

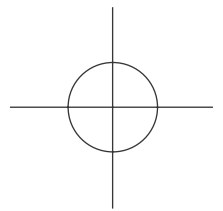


3. Micro-fine dosing device: In order to optimise the powder application at low extrusion speeds the machine can be equipped as an option with a continuously adjustable dosing device which makes sure that only a breath of powder is blown to the powder guns.

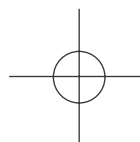
4. Control panel/Powder flow indicator: Compact operator panel to control the electrostatic, powder quantity adjustment and powder flow indicator incl. potential free contact, alarm lamp/horn.

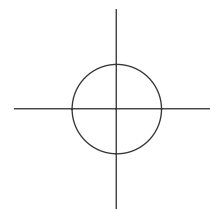
5. Powder refilling/Compressed air dryer: On the back side of the machine there is the door to refill the machine also during operation. For the protection of filters, fluidised bed and powder an air dryer will be mounted.

6. Powder loader: For the automatical refilling of the machine we deliver a 90 l powder loader which is connected to the machine by a 3 m long hose. The control is effected by a level sensor in the machine.



6.





## Powder coating machine

Diameter range:	max. 110 mm
Bands/profiles:	max. 200 mm width
Electrostatic:	100 kV
Powder guns:	1 – 2
Jet pumps:	1 – 2
Compressed air:	6 bar
Filling volume:	18 l
Electric connection:	0,7 kW
Dimensions	depth 280 mm x width 510 mm
dusting chamber:	x height 365 mm
Dimensions	depth 1.140 mm x width 800 mm
machine:	x height 1.942 mm
Weight approx.:	280 kg

Technical modifications reserved.  
Special machines available on request.

## Powder loader

Filling volume:	90 l
Compressed air:	6 bar
Hose connection:	max. 3 m
Electric connection:	via powder applicator
Dimensions:	depth 540 mm x width 500 mm
	x height 840 mm
weight:	35 kg

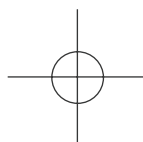
## Special machines

For extrusion lines in which there is no space for the machine we deliver a free standing dusting chamber with standard dimensions. For SZ stranding machines f. i. the free standing dusting chamber is also available with a width of 200 mm. The hose length between machine and dusting chamber is max. 3 m. We also deliver machines without electrostatic for simple applications like powdering of rubber hoses and profiles. For the powdering of bands machines with a working width of 1.000 mm are available.

## Company History

### Rolf Schlicht GmbH, Hamburg

Rolf Schlicht GmbH in Hamburg, founded in 1959, sells machines and plants to the worldwide cable, rubber and plastic industry. A well organised sales network in more than 30 countries guarantees a smooth co-operation between customer and manufacturer. Our well organised service department ensures a quick delivery of machines or spare parts as well as the action of our technical personnel. We supply in compliance to ISO 9001. We have test machines at our disposal and our construction department is equipped for the development of special machines.



Rolf  
Schlicht  
GmbH



Technologie für Gummi-,  
Kunststoff- und Kabelindustrie

Grootkoppel 16 • D-23858 Reinfeld  
Tel. +49 4533 6063-100 • Fax +49 4533 6063-101  
e-mail: [info@schlicht-gmbh.de](mailto:info@schlicht-gmbh.de)  
Internet: [www.schlicht-gmbh.de](http://www.schlicht-gmbh.de)